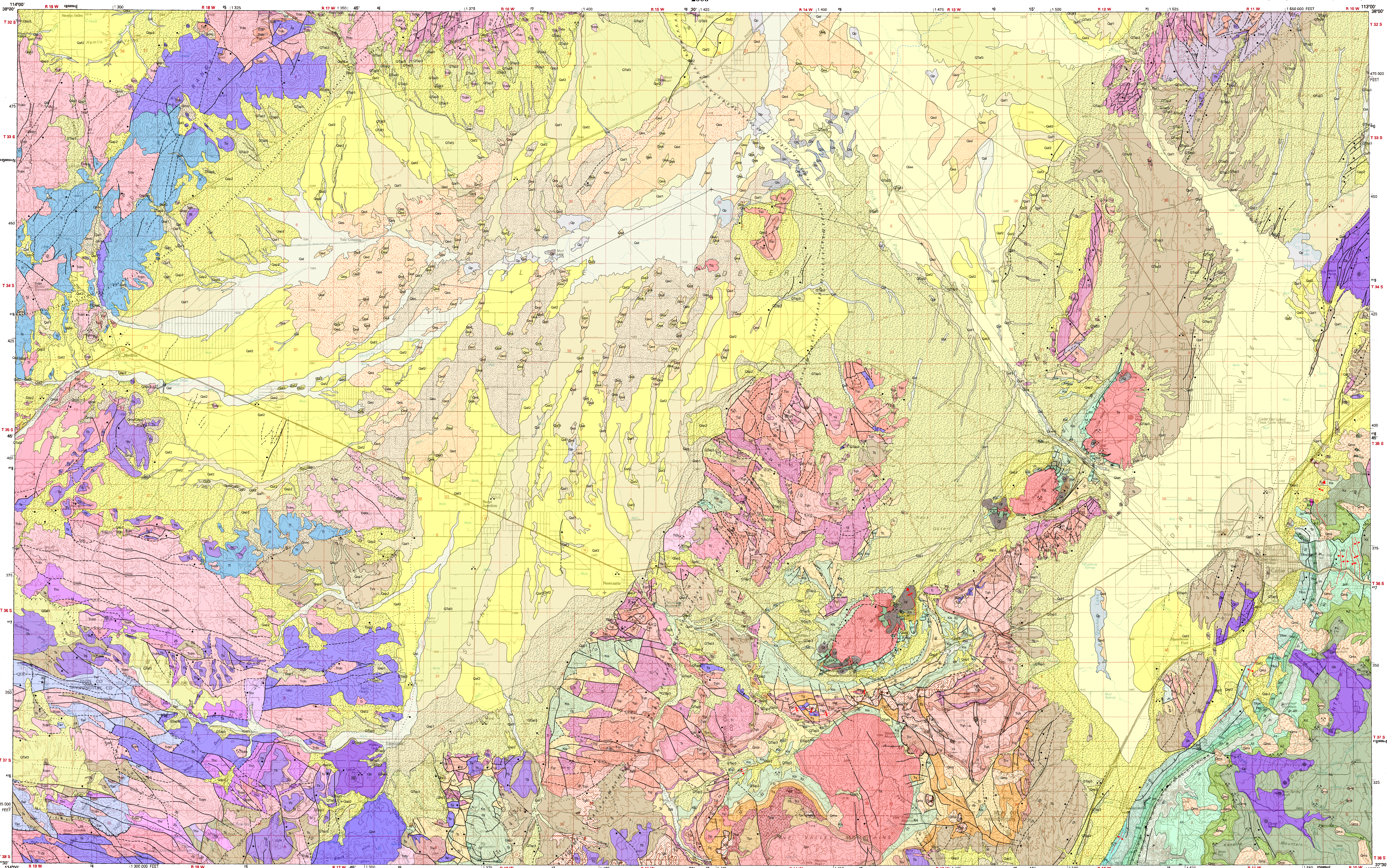


Interim Geologic Map of the Cedar City 30' x 60' Quadrangle, Iron and Washington Counties, Utah

By
Peter D. Rowley, Van S. Williams, Garrett S. Vice, David J. Maxwell, David B. Hacker, Lawrence W. Snee, and J. Hoover Mackin
2006



Base from U. S. Geological Survey Cedar City 30' x 60' Quadrangle, 1982

Although this product represents the work of professional scientists, the Utah Department of Natural Resources, Utah Geological Survey, makes no warranty, expressed or implied, regarding its suitability for any particular use. The Utah Department of Natural Resources, Utah Geological Survey, shall not be liable under any circumstances for any direct, indirect, special, incidental, or consequential damages with respect to claims by users of this product.

This geologic map was funded by the Utah Geological Survey and the U.S. Geological Survey, National Cooperative Geologic Mapping Program through USGS STATEMAP award number 02HQAC00055. The views and conclusions contained in this document are those of the author, and should not be interpreted as necessarily the official policies, either expressed or implied, of the U.S. government.

This open-file release is a progress report that provides the public with the preliminary results of mapping during the lengthy review process. The map may be incomplete and inconsistent, errors, and omissions have not been resolved. The map may not conform to USGS policy and editorial standards and it may be premature for an individual or group to take action based on its contents.

For use at 1:100,000 scale only. The Utah Geological Survey (UGS) does not guarantee accuracy or completeness of data.

SCALE 1:100 000
CONTOUR INTERVAL 50 METERS



147.2
TRUE NORTH
MAGNETIC NORTH
APPROXIMATE MEAN DECLINATION, 1992

This open-file report will be superseded by an improved geologic map following completion of reviews.

Digital Cartography by:
Southern Utah University GIS Laboratory
Garret S. Vice of Southern Utah University
Darryl Greer and J. Buck Elder of the
Utah Geological Survey

Project Manager: Grant Wallis

